

SAE Net Horsepower: 177 HP (132 kW)
Operating Weight: 56,900 lbs. (25 800 kg)
Digging Depth: 22 ft 8 in (6.90 m)

250x4



CONCRETE
SOLUTIONS

Link-Belt
EXCAVATORS



PERFORMANCE, PRODUCTIVITY AND RELIABILITY COME STANDARD

Link-Belt X4 Series excavators are built to exceed your expectations. We redesigned the control spools and incorporated spool stroke control (SSC) functions into the hydraulic system to reduce pressure loss and distribute hydraulic oil more smoothly, decreasing cycle times by up to 7%. Expect more power and fuel efficiency, thanks to an innovative Final Tier 4 engine that delivers up to 9% improved fuel consumption, **without a Diesel Particulate Filter (DPF) to maintain or replace!** Settle in to the roomiest, most accommodating cab in its class, with more legroom and a new high-back, heated seat for shift-long comfort. Daily maintenance is a snap, with ground-level access to all service points, easily opened by hand.



INNOVATION AND ATTENTION TO DETAILS AT EVERY LEVEL



- Three power modes (Speed Priority, Heavy and Applied Power) let you **choose the best blend of power, precision and fuel savings** for the work you're doing

- Ergonomic joysticks **fit your hand perfectly**



- EPA Final Tier 4 engine is **fuel efficient without sacrificing power**

- 7" high-definition LED monitor **keeps you connected to your machine and work environment**



- **No DPF** to ever worry about!
- 2-3% DEF (Diesel Exhaust Fluid) consumption rate relative to fuel consumption, combined with one of the largest DEF tank capacities lets you work long hours between refills

- RemoteCARE® telematics **keeps a watchful eye** on performance, maintenance intervals and theft deterrence



- Ground level access to routine service points lets you **cut daily maintenance down to just minutes**

- Full-time, rear-view camera display is standard; add the WAVES™ option for a **seamless 270° view around the machine**



- Quiet, pressurized cab offers **excellent visibility and comfortable, best-in-class seating**
- Enough floor space to **accommodate the largest of work boots**, with cup holders and roomy storage compartments for cell phones, snacks and other personal items

- Structural improvements to the boom and arm **reduce stress and provide greater durability**



- Dual cab working lights are standard, or choose optional LEDs for **added visibility**

- Robust undercarriage features **larger track rollers and thicker plating for longer life**
- Unique side-frame design **reduces dirt accumulation** and is **easier to clean**



*All improvements and percentage increases are in reference to Link-Belt X3 Series excavators, unless otherwise stated

**QUICK AND RESPONSIVE
TO TAKE ON TOUGH CHALLENGES**



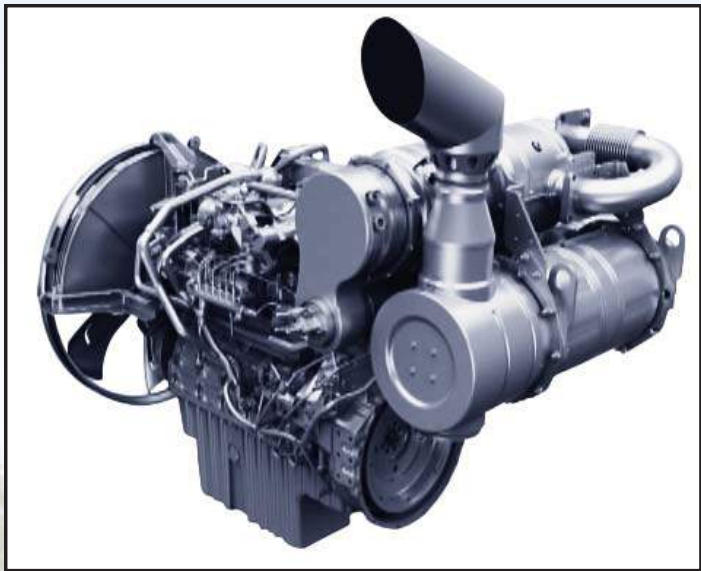
Greater digging power and increased lift capacities are the result of our innovative Spool Stroke Control (SSC) system, which reduces pressure loss and distributes hydraulic oil more smoothly. Pilot pressure sensors detect the type of work being done—such as digging or leveling—and then relays that data to proportional solenoid valves that quickly determine where optimal hydraulic pressures should be directed for that operation.

Two electronically-controlled Kawasaki variable-displacement axial-piston pumps and one Kawasaki gear pump assure that hydraulic power is delivered precisely when and where it's needed. At the same time, hydraulic flows in noncritical areas of the system are reduced.

The result is better breakout force, more lifting strength and faster machine response. You'll dig, swing and dump quicker than ever before... with up to 7% faster cycle times and improved fuel efficiency!

- Proprietary hydraulic system
- New control valve with larger ports; less restriction means improved hydraulic flow for increased performance
- Electronically-controlled pumps for improved cycle times, quicker response and more efficient machine operation
- Move more dirt per gallon of fuel





The X4 Series features innovative EPA-certified Final Tier 4 engines from Isuzu that strike the ultimate balance between power, productivity and fuel efficiency. You'll experience up to 5% improved fuel efficiency, without having to worry about costly diesel particulate filters (DPF) to maintain or replace. Three engine modes provide reliable power and control for any machine application. Choose Speed Priority (SP mode) to get jobs done quickly, Heavy (H mode) for the best blend of power and fuel savings or Applied Power (A mode), with 13 different RPM settings for precise control of heavy lifting, fine grading or leveling work.

- EPA-certified Tier 4 Final
- No DPF to maintain
- Up to 9% improved fuel economy
- 500-hr. fuel filters service intervals
- 10 diesel tank refills per 1 diesel exhaust fluid (DEF) refill
- 2-3% DEF consumption rate relative to fuel consumption
- Two-stage DEF anti-freeze system for protection in harsh operating conditions
- 30 hrs. between SCR regenerations, only takes 5-8 minutes to complete!
- VGT (Variable Geometry Turbocharger)
- Standard air pre-cleaner for improved air filtration



POWER AND EFFICIENCY WITHOUT COMPROMISE





The X4 Series offers one of the most advanced and roomiest cabs in its class. Comfortable, automotive-grade high-back seat with head rest provides superior lumbar back support. With a longer and wider seating surface, it reclines to a 155° maximum reclining angle to create a relaxed environment during breaks. Mechanical suspension is standard, with air suspension, seat tilting adjustment and seat heaters available as options.

The cab layout also includes ergonomically-designed arm rests that move with console, maintaining a constant distance between joysticks and arm rests no matter how the seat is adjusted.

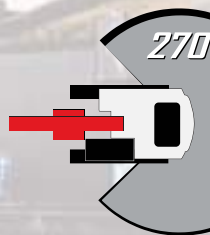
- Quiet, pressurized cab
- Joysticks with easy-to-hold grip and switches
- Convenient 'radio mute' and one touch wiper switch
- Optional proportional joysticks w/ auxiliary hydraulics control
- Cup holder and storage areas for cell phones and other small items
- Dual halogen cab lights standard
- Full time rear camera display
- Optional RH & LH side cameras
- ROPS and FOPS Level 1 certified, optional FOPS Level 2 head guard available
- Optional LED lights use less energy and are 3X brighter!
- Optional retractable rear window shade
- Optional front sun visor
- Improved radio with USB port and Bluetooth for hands-free communication.
- Free swing standard





High-Definition LED monitor has a full-color 7" display that rivals the resolution found in luxury automobiles. Controls are easy to read and easy to use. The rear-view camera activates automatically whenever the machine is started, and sight guidelines have been added for increased safety.

- Anti-glare coating on screen
- Track up to 14 service maintenance reminders
- System/machine warning messages
- Monitor SCR auto regeneration
- Select and set up attachments: 5 presets for breakers; 5 presets for crushers
- In-cab flow and pressure controls for auxiliary hydraulics
- Anti-theft system
- Auto-adjusts for time and calendar
- 24 languages available
- Ability to view fuel consumption



270° WAVES™

WIDE-ANGLE VISUAL ENHANCEMENT SYSTEM

For the ultimate in visibility, X4 machines can be fitted with the Wide Angle Visual Enhancement System - or WAVES for short. Using three closed-circuit cameras, this optional viewing system provides an unbelievable 270° visual coverage around the machine, eliminating any potential blind spots from the operator's line of sight. WAVES images can be displayed on the standard X4 monitor.





Maintenance is a snap, with ground level access to all routine service points, including batteries, fuel filters, engine oil filter, dual-element air filter and cab fresh air filter.

- Radiator screens are easy to remove and clean from ground level...no tools needed!
- A/C Condenser tilts for easy cleaning and maintenance
- Easy battery compartment access; 2 hand-turn knobs
- Improved battery disconnect switch with no keys needed and LED light
- Convenient ground-level sample ports in pump compartment
- Green drain plug and hose
- More data collection points
- Automatic door locking mechanism on side door
- Quick and easy access to grease all attachment pivot points
- Grease cylinder track adjusters make adjusting track tension a breeze
- New undercarriage side frame design enables easier cleaning
- In-cab reminders track 14 different maintenance procedures



GET WORKING FAST WITH EASY ACCESS TO SERVICE POINTS



RemoteCARE® lets you remotely monitor and track machine location, operational performance, working status and periodic maintenance requirements. It tracks and records both routine and major service intervals for your machines, giving you more flexibility and control when scheduling maintenance procedures. It also lets you be more proactive if potential failure conditions arise; whenever a diagnostic trouble code (DTC) is detected, a warning message appears on the machine display, and an e mail alert is automatically sent to you. RemoteCARE also assists in theft prevention by offering 24/7 surveillance and geofencing capabilities.

- 24/7 Remote Monitoring and Security
- Machine Location
- Geo-fence & Curfew Range
- Actual Fuel Consumption
- Fuel Levels
- Hour Meter Reading
- Radiator Water Temperature
- Machine Working Time/Idle Time
- Attachment Working Hours
- Working Modes
- Service Maintenance Reminders
- Service Warnings
- 6-yr. complimentary subscription

BUILT STRONG TO HANDLE ANYTHING

X4 machines are more rugged and durable, with robust structural improvements to the boom & arm structures, along with improvements to lower frame and travel components.



Boom & Arm

- Improved boss shapes reduce stress on boom and arm pin
- Cast boom tip for increased reliability



Lowers

- Thicker travel motor case - 32% increase
- 37% longer idler shoulder and hub
- Unique side-frame design reduces dirt accumulation and is easier to clean.
- Track roller diameter increased by 7%



CUSTOMER SUPPORT IS JUST A CALL AWAY

A network of Link-Belt Excavator dealers across the U.S. and Canada is waiting to serve you. Expect fast and dependable service, backed by 24/7 access to parts.

Rock-Solid Warranty Coverage

All X4 machines are backed by a 1-year/1,800 hour Full Machine Warranty, 2-year/3,000 hour Engine Warranty (2,000 hrs. electrical parts), 3-year/5,000 hour Powertrain Warranty, 3-year/10,000 hour XtraStructure Warranty, 5-year/3,000 hour EPA Emissions Warranty and participation in the X4 Fluids Analysis Program for the life of the warranty. Extended warranty coverage packages are also available.



SPECIFICATIONS



Engine

Isuzu AQ-4HK1X Final Tier 4 turbocharged diesel engine with electronic control (ECM) and high pressure common-rail fuel injection, 4-cylinder, water-cooled, Cooled Exhaust Gas Recirculation (CEGR), Intercooler, Variable-Geometry Turbocharger (VGT), Diesel Oxidation Catalyst (DOC) and Selective Catalytic Reduction (SCR) system with Dosing Control Module and heated DEF lines and tank. Electronic fuel pump and priming, Fuel cooler, Auto-idle start, Auto warm-up, EPF engine protection, dual-stage fuel filtration, remote oil filter, engine oil sample port, green plug oil drain, double element air filter.

SAE J 1349 net horsepower.....	177 hp (132 kW) @ 2,000 rpm
Displacement	317 cu in (5.2 L)
Maximum Torque.....	458 lbf-ft (621 Nm) @ 1,800 rpm
Starter	24V-5.0kW
Alternator.....	50 amp
Battery.....	(2) 12-volt 92 amp hours



Cab and Controls

ROPS and FOPS Level 1 certified with automatic climate control A/C and heat with defroster, 7" LED Hi-Definition color monitor with full time rear view camera display, fuel efficiency gauge, low-effort joysticks are pre-wired for auxiliary hydraulics, dual cab lights, control pattern changer, safety glass windows, sunroof with sunshade, shockless cab suspension with four fluid cab mounts, SCM High-Back reclining suspension seat, sliding 4-position tilting control consoles, Bluetooth technology, AM/FM sound system with USB and MP3 auxiliary input jack, digital clock, dome light, seat belt, coat hook, cup holder, storage compartments, floor mat, footrests, ashtray, 24V cigarette lighter, 12V outlet, travel alarm, handrails, mirrors, side-entry cab filter, spare parts kit.

Three selectable work modes, RemoteCARE Telematics GPS system, anti-theft password protection system, onboard self-diagnostic system with memory and service interval reminders, auto idling system, one-touch decelerator, auto-idle engine shutdown, auto-power boost, neutral safety start, gate-lock safety shutoff.



Hydraulic System

Open-center system, two variable-displacement electronically controlled axial-piston pumps and one gear pump for pilot controls, main control valve with one 4-spool section and one 5-spool section with auxiliary spool: stackable, Auxiliary Control System, oil cooler, Auto-Power boost, boom and arm holding valves, 6 micron return filter, firewall, hydraulic oil sample port.

Hydraulic Pumps

Pump Output.....	2 x 61.8 gpm (234 L/min)
Pilot Pump Maximum Flow.....	5.3 gpm (20 L/min)

Relief Valve Settings

Boom/Arm/Bucket.....	4,970 psi (34.3 MPa)
in Power Boost	5,410 psi (37.3 MPa)
Swing Circuit	4,190 psi (28.9 MPa)
Travel Circuit	4,970 psi (34.3 MPa)

Hydraulic Cylinders

	number of cylinders - bore x rod x stroke
Boom.....	2 - 5.1" x 3.5" x 52.6" (130 mm x 90 mm x 1,335 mm)
Arm	1 - 5.7" x 4.1" x 65.4" (145 mm x 105 mm x 1,660 mm)
Bucket.....	5.1" x 3.5" x 42.1" (130 mm x 90 mm x 1,070 mm)



Swing

Planetary reduction powered by axial-piston motor, Internal ring gear with grease cavity for swing pinion, Swing bearing is single-row, shear type ball bearing, Mechanical disc swing brake, Auto-power swing.

Swing Speed	10.6 rpm
Tail Swing	9' 8" (2.95 m)
Swing Torque	55,300 lbf-ft (74.9 kNm)

Undercarriage

X Pattern carbody with 15' 3" (4.65 m) LC long undercarriage by 8' 6" (2.59 m) track gauge, Sealed and strutted track chain with track guide, Sealed rollers and idlers, Two-speed independent hydrostatic travel with compact planetary final drive, Disc type brakes, Adjustable track tension, Carbody belly pan.

Carrier Rollers	2 per Side
Track Rollers	9 per Side
Track Link Pitch	7.48" (190 mm)
Shoes	51 per Side
Shoe Width.....	31.5" (800 mm)
Ground Pressure.....	5.51 psi (0.038 MPa)



Travel System

Two-speed independent hydrostatic travel with compact axial-piston motors, Hydraulic motor powered output shaft coupled to a planetary reduction drive and track sprocket, All hydraulic components mounted within the width of side frame, Automatic downshift for high torque to overcome obstacles, Spring-applied hydraulic release parking brake built into each motor, Travel motors equipped with counterbalance valve to prevent over-speeding down an incline, Single-pedal straight line travel.

Travel Speeds	2.2 - 3.4 mph (3.5 - 5.5 km/h)
Drawbar Pull.....	44,962 lbf (200 kN)
Gradeability	70% (35°)



Attachment

Boom	19' 2" (5.85 m)
Available Arms	Digging Force
• 9' 10" (3.00 m)	26,980 lbf (120 kN)
with Auto Power Boost	29,230 lbf (130 kN)
• 8' 2" (2.50 m)	31,700 lbf (141 kN)
with Auto Power Boost	34,400 lbf (153 kN)
• 11' 6" (3.52 m)	24,050 lbf (107 kN)
with Auto Power Boost	26,080 lbf (116 kN)
• Bucket Digging Force	36,420 lbf (162 kN)
with Auto Power Boost	39,570 lbf (176 kN)



Lubricant & Coolant Capacity

Fuel Tank	108 Gallons (410.0 Liters)
Hydraulic System	66 Gallons (250.0 Liters)
Hydraulic Tank	39 Gallons (147.0 Liters)
Final Drive (per side)	1.3 Gallons (5.0 Liters)
Swing Drive	2.6 Gallons (9.7 Liters)
Engine Oil.....	6.1 Gallons (23.1 Liters)
DEF Tank.....	31 Gallons (120.0 Liters)
Coolant System	8.3 Gallons (31.4 Liters)

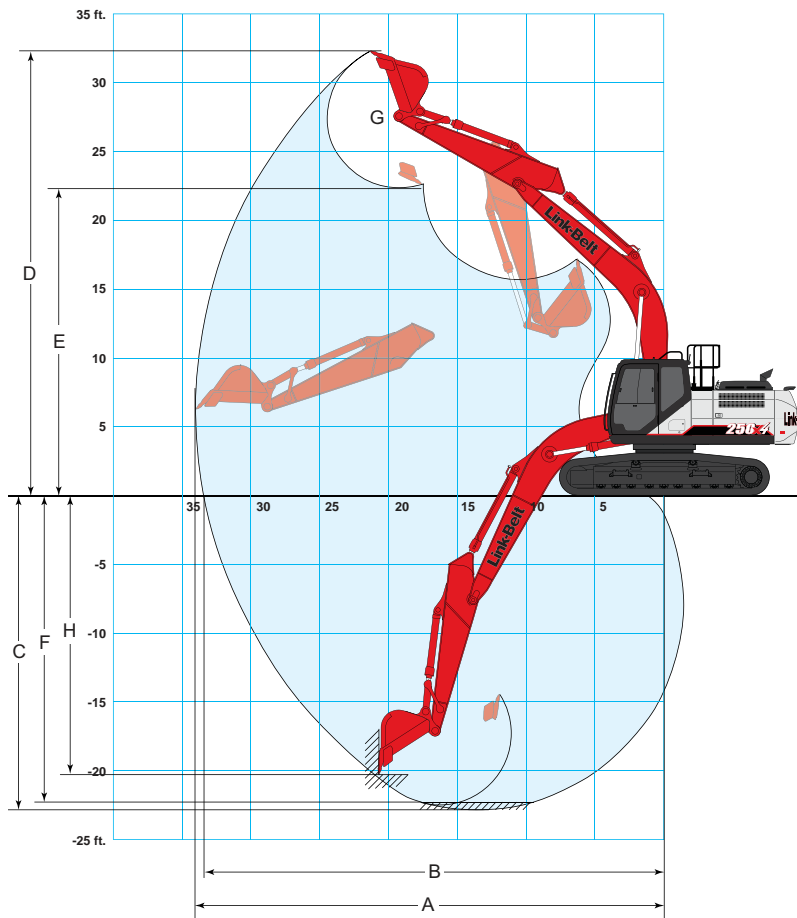


Operating Weight

Working weight with 31.5" (800 mm) shoes, 19' 2" (5.85 m) boom, 9' 10" (3.0 m) arm, 1,790 lb. (810 kg) bucket, 11,500 lb. (5 220 kg) counterweight

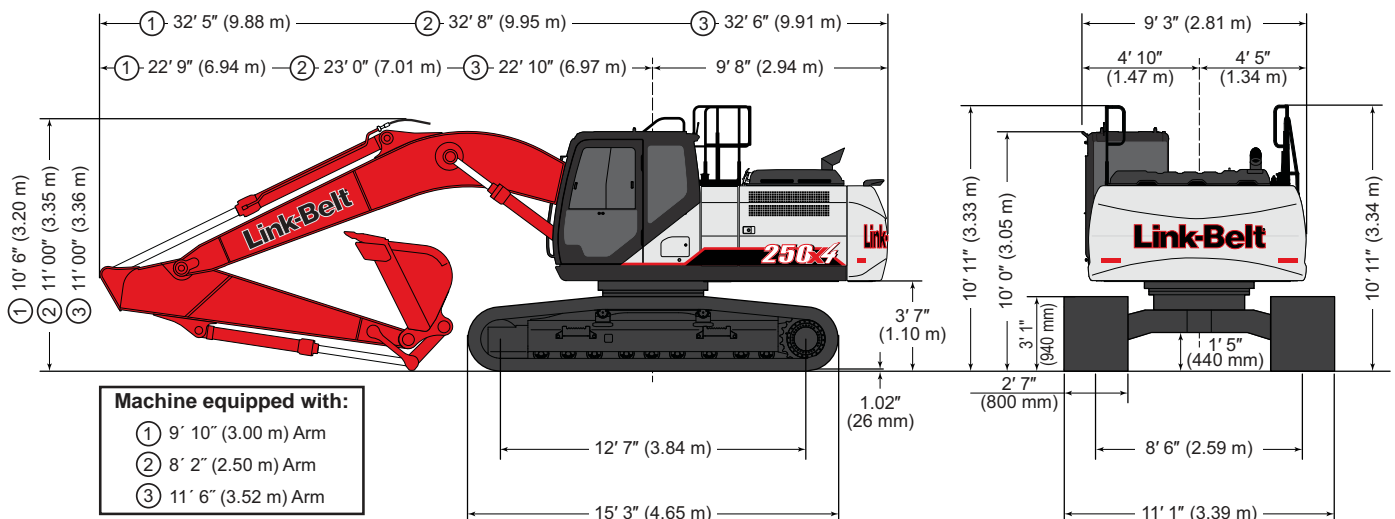
56,900 lbs. (25 800 kg)

WORKING RANGE & TRAVEL DIMENSIONS



Machine Equipped with 19' 2" (5.85 m) Boom	Arm 9' 10" (3.00 m)	Arm 8' 2" (2.50 m)	Arm 11' 6" (3.52 m)
A. Maximum reach	33' 9" (10.28 m)	32' 3" (9.82 m)	35' 5" (10.79 m)
B. Maximum reach @ ground level	33' 2" (10.10 m)	31' 7" (9.63 m)	34' 10" (10.62 m)
C. Maximum dig depth	22' 8" (6.90 m)	21' 0" (6.40 m)	24' 4" (7.42 m)
D. Maximum dig height	32' 0" (9.76 m)	31' 4" (9.56 m)	33' 0" (10.07 m)
E. Maximum dump height	22' 2" (6.76 m)	21' 6" (6.55 m)	23' 2" (7.06 m)
F. Digging depth 8' (2.44 m) level bottom	22' 1" (6.74 m)	20' 4" (6.21 m)	23' 10" (7.27 m)
G. Bucket rotation	175°	175°	175°
H. Maximum vertical wall depth	20' 2" (6.14 m)	18' 8" (5.70 m)	21' 11" (6.68 m)

Travel Dimensions



LIFT CAPACITIES

Radius of Load															
9' 10" (3.00 m) Arm with 19' 2" (5.85 m) Boom and 1,800 lb. (810 kg) Bucket with Power-Boost Applied															
End	Side	5' 0" (1.5 m)		10' 0" (3.0 m)		15' 0" (4.5 m)		20' 0" (6.0 m)		25' 0" (7.5 m)		30' 0" (9.0 m)		Cap at Max. Reach	
		End	Side	End	Side	End	Side	End	Side	End	Side	End	Side	End	Side
+25' 0" (7.5 m)	lbs									8,700*	8,700*			5,400*	5,400*
	kg									4 230*	4 230*			2 430*	2 430*
+20' 0" (6.0 m)	lbs									10,700*	10,300*			5,100*	5,100*
	kg									4 900*	4 810*			2 310*	2 310*
+15' 0" (4.5 m)	lbs							13,600*	13,600*	12,450*	10,000*	9,250*	7,150	5,050*	5,050*
	kg							6 300*	6 300*	5 760*	4 670*	4 560*	3 350	2 290*	2 290*
+10' 0" (3.0 m)	lbs			29,200*	29,200*	21,250*	21,250*	16,400*	13,900	13,900*	9,600	10,500	7,000	5,200*	5,200*
	kg			13 660*	13 660*	9 880*	9 880*	7 590*	6 460	6 400*	4 470	4 900	3 260	2 360*	2 360*
+5' 0" (1.5 m)	lbs			22,500*	22,500*	26,350*	20,500	19,050*	13,100	13,900	9,200	10,300	6,750	5,500*	5,500*
	kg			9 550*	9 550*	12 230*	9 510	8 810*	6 090	6 460	4 280	4 790	3 150	2 490*	2 490*
Ground Line	lbs			21,350*	21,350*	29,200*	19,350	19,350	12,500	13,500	8,850	10,100	6,600	6,000*	6,000*
	kg			9 400*	9 400*	13 500*	8 990	9 000	5 810	6 290	4 120	4 700	3 070	2 730*	2 730*
-5' 0" (1.5 m)	lbs	20,150*	20,150*	27,050*	27,050*	29,650*	19,000	18,950	12,150	13,300	8,650			6,950*	6,600
	kg	9 040*	9 040*	12 000*	12 000*	13 700*	8 830	8 820	5 660	6 190	4 030			3 140*	2 990
-10' 0" (3.0 m)	lbs	24,850*	24,850*	36,500*	36,500*	28,850*	19,100	19,000	12,250	13,450	8,850			8,550*	7,700
	kg	11 130*	11 130*	16 120*	16 120*	13 330*	8 890	8 840	5 690	6 250	4 090			3 850*	3 460
-15' 0" (4.5 m)	lbs	34,550*	34,550*	37,300*	37,300*	25,750*	19,600	18,650*	12,750					12,000*	9,950
	kg	15 350*	15 350*	17 320*	17 320*	11 970*	9 110	8 720*	5 890					5 300*	4 430
-20' 0" (6.0 m)	lbs			26,200*	26,200*	17,800*	17,800*							14,050*	14,050*
	kg			12 480*	12 480*	8 590*	8 590*							6 150*	6 150*

Radius of Load															
8' 2" (2.50 m) Arm with 19' 2" (5.85 m) Boom and 1,900 lb. (870 kg) Bucket with Power-Boost Applied															
End	Side	5' 0" (1.5 m)		10' 0" (3.0 m)		15' 0" (4.5 m)		20' 0" (6.0 m)		25' 0" (7.5 m)		30' 0" (9.0 m)		Cap at Max. Reach	
		End	Side	End	Side	End	Side	End	Side	End	Side	End	Side	End	Side
+25' 0" (7.5 m)	lbs													7,800*	7,800*
	kg													3 510*	3 510*
+20' 0" (6.0 m)	lbs									11,800*	10,050			7,400*	7,400*
	kg									5 440*	4 690			3 340*	3 340*
+15' 0" (4.5 m)	lbs					12,850*	12,850*	14,700*	14,150	13,300*	9,800	7,550*	6,950	7,300*	6,900
	kg					6 360*	6 360*	6 780*	6 570	6 140*	4 550	4 440*	3 250	3 310*	3 120
+10' 0" (3.0 m)	lbs			33,300*	33,300*	22,400*	21,350	17,300*	13,600	14,050	9,400	10,350	6,800	7,500*	6,400
	kg			12 750*	12 750*	10 300*	9 920	8 000*	6 310	6 530	4 370	4 820	3 180	3 390*	2 900
+5' 0" (1.5 m)	lbs					26,750*	19,950	19,550	12,850	13,700	9,000	10,150	6,650	7,900*	6,300
	kg					12 330*	9 270	9 090	5 970	6 380	4 190	4 730	3 090	3 580*	2 850
Ground Line	lbs			19,600*	19,600*	29,600*	19,050	19,100	12,300	13,400	8,700	8,950*	6,550	8,600*	6,500
	kg			8 640*	8 640*	13 670*	8 860	8 900	5 720	6 220	4 060	4 670	3 040	3 900*	2 950
-5' 0" (1.5 m)	lbs	22,000*	22,000*	27,750*	27,750*	29,450*	18,950	18,900	12,100	13,300	8,650			9,950*	7,200
	kg	9 810*	9 810*	12 270*	12 270*	13 600*	8 810	8 790	5 620	6 170	4 010			4 490*	3 250
-10' 0" (3.0 m)	lbs	27,550*	27,550*	40,300*	37,850	28,050*	19,200	19,050	12,300	13,500	8,850			12,400*	8,550
	kg	12 310*	12 310*	17 740*	17 610	12 960*	8 920	8 850	5 700	6 290	4 140			5 540*	3 850
-15' 0" (4.5 m)	lbs			33,950*	33,950*	23,850*	19,850	16,700*	12,850					14,500*	11,550
	kg			15 780*	15 780*	11 120*	9 210	7 920*	5 970*					6 570*	5 130

Radius of Load															
11' 6" (3.52 m) Arm with 19' 2" (5.85 m) Boom and 1,750 lb. (790 kg) Bucket with Power-Boost Applied															
End	Side	5' 0" (1.5 m)		10' 0" (3.0 m)		15' 0" (4.5 m)		20' 0" (6.0 m)		25' 0" (7.5 m)		30' 0" (9.0 m)		Cap at Max. Reach	
		End	Side	End	Side	End	Side	End	Side	End	Side	End	Side	End	Side
+25' 0" (7.5 m)	lbs									7,350*	7,350*			4,300*	4,300*
	kg									3 380*	3 380*			1 950*	1 950*
+20' 0" (6.0 m)	lbs									9,500*	9,500*	7,200*	7,200*	4,100*	4,100*
	kg									4 430*	4 430*	3 570*	3 460	1 850*	1 850*
+15' 0" (4.5 m)	lbs									11,550*	10,150	9,300*	7,250	4,050*	4,050*
	kg									5 280*	4 730	4 390*	3 390	1 830*	1 830*
+10' 0" (3.0 m)	lbs					19,200*	19,200*	15,250*	14,050	13,000*	9,700	10,550	7,000	4,100*	4,100*
	kg					8 920*	8 920*	7 040*	6 520	5 990*	4 520	4 930*	3 270	1 880*	1 880*
+5' 0" (1.5 m)	lbs			32,550*	32,550*	24,650*	20,850	18,100*	13,250	13,950	9,250	10,300	6,750	4,350*	4,350*
	kg			13 610*	13 610*	11 420*	9 680	8 350*	6 160	6 480	4 300	4 790	3 150	1 980*	1 980*
Ground Line	lbs	9,750*	9,750*	22,450*	22,450*	28,250*	19,500	19,400*	12,550	13,500	8,850	10,050	6,550	4,750*	4,750*
	kg	4 370*	4 370*	9 850*	9 850*	13 070*	9 060	9 020	5 820	6 290	4 110	4 680	3 050	2 160*	2 160*
-5' 0" (1.5 m)	lbs	17,000*	17,000*	25,950*	25,950*	29,500*	18,850	18,900	12,100	13,200	8,550	9,950	6,450	5,450*	5,450*
	kg	7 750*	7 750*	11 470*	11 470*	13 630*	8 760	8 790	5 620	6 150	3 990	4 620	2 990	2 470*	2 470*
-10' 0" (3.0 m)	lbs	22,250*	22,250*	33,300*	33,300*	29,100*	18,850	18,800	12,050	13,250	8,600			6,600*	6,600*
	kg	9 980*	9 980*	14 720*	14 720*	13 450*	8 780	8 760	5 600	6 150	4 000			2 980*	2 980*
-15' 0" (4.5 m)	lbs	32,900*	32,900*	39,800*	38,550	27,000*	19,250	18,950	12,400	12,700*	8,900			8,900*	8,450
	kg	14 560*	14 560*	18 450*	17 980*	12 510*	8 940	8 820	5 740	6 250	4 150			3 950*	3 790
-20' 0" (6.0 m)	lbs			30,950*	30,950*	21,250*	19,650	13,850*	12,700					13,200*	12,400
	kg			14 570*	14 570*	10 050*	9 140	6 820*	5 920					5 970*	5 450

Notes: Excavator lifting capacities

- Lifting capacities shown should not be exceeded. Weight of all lifting accessories must be deducted from the above lifting capacities.
- Lifting capacities are based on machine standing on firm, uniform supporting surface. User must make allowances for job conditions such as soft or uneven ground.
- Lifting capacities shown do not exceed 75% of minimum tipping loads or 87% of hydraulic capacities. Capacities marked with an asterisk (*) are limited by hydraulic capacities.
- Least stable position is over the side.
- Operator should be fully acquainted with the Operator's Manual & Operating Safety Booklet, furnished by LBX before operating the machine.
- Capacities apply only to the machine as originally manufactured and normally equipped by LBX Company, LLC.
- Lift capacity ratings are based on ISO 10567, "Earthmoving Machinery - Hydraulic Excavators - Lift Capacity."

STANDARD & OPTIONAL EQUIPMENT

CAB		HYDRAULICS	
12V Power Outlet.....S	Small Storage.....S	Arm Regeneration.....S	Strutted Track Chain.....S
270° WAVES™ Camera System.....O	Travel Alarm with Cancel Switch.....S	Arm Speed Assistance (2 Pump Flow).....S	X-Pattern Carbody.....S
AM/FM Sound System.....O	Trip Meter (Digital).....S	Attachment Cushion Valve.....S	UPPERSTRUCTURE
Anti-Theft Device.....S	USB Input.....S	Auto Swing Priority.....S	Belly Pans.....S
Auxiliary Switches on Control Lever.....S	Wiper & Washer.....S	Auxiliary Flow Control.....S	Center Cover (Over Main CV).....S
Bluetooth.....S	Wiper Switch on RH Joystick.....S	Auxiliary Tool Settings (Memory).....S	Fuel Tank Belly Pan.....S
Cab Filter - External.....S	ENGINE	Auxiliary Valve.....S	Hand Rail (RH access).....S
Cab Handrails.....S	50A Alternator.....S	Boom Regeneration.....S	ISO Guard Rails.....S
Cab Interior Light.....S	85A Alternator.....O	Boom Speed Assistance (2 Pump Flow).....S	Lifting Eyes for Counterweight.....S
Cab ISO-Mounts.....S	Air Filter (Double Element).....S	Bucket Curl Assist.....S	Lockable Fuel Cap and Service Doors.....S
Cab Light (2 LED).....O	Air Filter Restriction Indicator.....S	Control Levers Pre-Wired for Auxiliary Hyd...S	Lockable Tool Box.....S
Cab Light (2).....S	Auto Pre-Cleaner (Cyclone type).....S	Control Pattern Changer (2 way).....S	Rubber Bumper Guards.....O
Cab Sun Screen (rear).....O	Auto Warm-Up System.....S	Electronically Controlled Hydraulic Pumps...S	Side Guards (Full-length, welded, triangulated steel).....O
Clear Roof Window.....S	Auto-Idle.....S	Fire Wall.....S	Turntable Tub.....S
Climate Control A/C and Heater.....S	Auto-Idle Engine Shutdown.....S	Free Swing.....S	Work Lights (Boom and Tool Box).....S
Cup Holder.....S	Battery Disconnect Switch w/ LED Light...S	Holding Valve (Arm & Boom).....S	ATTACHMENT
Defroster.....S	CEGR (Cooled Exhaust Gas Recirculation)...S	Hose Burst Check Valve.....O	8' 2" (2.50 m) Short Arm.....O
Digital Clock.....S	CEGR (Cooled Exhaust Gas Recirculation)...S	Hydraulic Filter Restriction Indicator.....S	9' 10" (3.00 m) Arm.....O
Emergency Exit and Hammer.....S	CEGR (Cooled Exhaust Gas Recirculation)...S	Hydraulic Oil Sample Port.....S	11' 6" (3.52 m) Arm.....O
Face Vent.....S	CEGR (Cooled Exhaust Gas Recirculation)...S	Long Life Hydraulic Oil (5,000 Hour).....S	19' 2" (5.85 m) Main Boom Section.....S
Floor Mat.....S	CEGR (Cooled Exhaust Gas Recirculation)...S	Neutral Pump De-Stroke.....S	Auxiliary Pipe Brackets.....S
FOPS Head Guard (Level 2).....O	CEGR (Cooled Exhaust Gas Recirculation)...S	Oil Cooler.....S	Boom Work Light.....S
FOPS Level 1 Certified.....S	CEGR (Cooled Exhaust Gas Recirculation)...S	Power Boost.....S	Bucket Anti-Clatter Device.....S
Front Guard (Mesh).....O	CEGR (Cooled Exhaust Gas Recirculation)...S	Power Save.....S	Chrome Pins.....S
Front Guard (DPG 1,2).....O	CEGR (Cooled Exhaust Gas Recirculation)...S	Pressure Reading on Monitor.....S	Easy Maintenance System (EMS).....S
Front Window One-Touch Lock.....S	CEGR (Cooled Exhaust Gas Recirculation)...S	Proportional Hydraulic Controls.....O	HD Bucket Linkage.....O
Gate Lock Hydraulic Activation.....S	CEGR (Cooled Exhaust Gas Recirculation)...S	Pump Stand-By Pressure.....S	Pilot Couplers.....O
Horn.....S	CEGR (Cooled Exhaust Gas Recirculation)...S	Single Pedal Travel.....S	Remote Lube Bank.....S
Hour Meter (Digital).....S	CEGR (Cooled Exhaust Gas Recirculation)...S	Straight Travel Circuit.....S	Teardrop Pin Retention Keepers.....S
LED Color Monitor.....S	CEGR (Cooled Exhaust Gas Recirculation)...S	AUXILIARY HYDRAULIC OPTIONS	Thumbs.....O
LED Light Kit for Side Camera (1).....O	CEGR (Cooled Exhaust Gas Recirculation)...S	Single-Acting Aux. w/ Proportional Joysticks...O	PARTS KIT
LED Lights for Rear Camera (2).....O	CEGR (Cooled Exhaust Gas Recirculation)...S	Multi-Function Aux. w/ in-cab pressure setting control.....O	Bucket Anti-Clatter Device.....S
Magazine Storage Rack.....S	CEGR (Cooled Exhaust Gas Recirculation)...S	Thumb Aux. w/ Proportional Joysticks...O	Engine Manual.....S
Maintenance Interval Reminders.....S	CEGR (Cooled Exhaust Gas Recirculation)...S	Combination Aux. w/ in-cab pressure setting control.....O	Engine Oil Filter.....S
MP3 Auxiliary Input Jack.....S	CEGR (Cooled Exhaust Gas Recirculation)...S	UNDERCARRIAGE	Filter Wrench.....S
On-Board Diagnostic System.....S	CEGR (Cooled Exhaust Gas Recirculation)...S	600 mm (23.5" in) 3-Bar Steel Grousers...O	Fuel Filters.....S
One-Piece Right Window.....S	CEGR (Cooled Exhaust Gas Recirculation)...S	700 mm (27.5" in) 3-Bar Steel Grousers...O	Grease Gun.....S
Radio Mute Switch.....S	CEGR (Cooled Exhaust Gas Recirculation)...S	800 mm (31.5" in) 3-Bar Steel Grousers...S	Green Plug Drain Hose for Engine Oil Drain...S
Rain Deflector.....O	CEGR (Cooled Exhaust Gas Recirculation)...S	Carbody Belly Pan (Swivel Guarding).....S	Hydraulic Return Filter.....S
Rear View Camera.....S	CEGR (Cooled Exhaust Gas Recirculation)...S	Center Track Guide (single).....S	Ignition Keys.....S
Rear View Mirrors (2).....S	CEGR (Cooled Exhaust Gas Recirculation)...S	Center Track Guide (triple).....O	Pilot Circuit Hydraulic Filter.....S
RemoteCARE Support System (GPS).....S	CEGR (Cooled Exhaust Gas Recirculation)...S	Lashing Points (Tie-Downs).....S	Rearview Mirrors.....S
Roof Sun Shade.....S	CEGR (Cooled Exhaust Gas Recirculation)...S	Long Undercarriage.....S	Work Light for Boom.....S
ROPS Certified Structure.....S	CEGR (Cooled Exhaust Gas Recirculation)...S	Sealed Link Chain.....S	
Safety Glass Windows.....S	CEGR (Cooled Exhaust Gas Recirculation)...S	Steps.....S	
SCM Air-Suspension Seat with Tilt & Heater...O	CEGR (Cooled Exhaust Gas Recirculation)...S		
SCM Suspension Seat.....S	CEGR (Cooled Exhaust Gas Recirculation)...S		
Seat Recline.....S	CEGR (Cooled Exhaust Gas Recirculation)...S		
Selectable Monitor Languages.....S	CEGR (Cooled Exhaust Gas Recirculation)...S		

Equipment Key
Standard - S Optional - O

Bucket Sizes

Bucket Type	SAE Heaped Capacity		Width Outside Lip		Bucket Weight		Number of Teeth	Arm Length		
	(yd³)	(m³)	(in)	(mm)	(lbs)	(kg)		8' 2" 2.50 m	9' 10" 3.00 m	11' 6" 3.50 m
STDP Standard duty plate	0.80	0.61	24	610	1285	583	3	H	H	H
	1.06	0.81	30	762	1458	661	4	H	H	H
	1.33	1.02	36	914	1630	739	5	H	H	H
	1.61	1.23	42	1067	1774	805	5	H	M	M
	1.89	1.45	48	1219	1918	870	5	M	M	L
	2.16	1.65	54	1372	2091	948	6	L	L	L
2.43	1.86	60	1524	2239	1016	6	L	L	N/A	
HDP Heavy duty plate	0.80	0.61	24	610	1498	679	3	H	H	H
	1.06	0.81	30	762	1705	773	4	H	H	H
	1.33	1.02	36	914	1873	850	4	H	H	H
	1.61	1.23	42	1067	2080	943	5	M	M	M
	1.89	1.45	48	1219	2247	1019	5	M	L	L
	2.16	1.65	54	1372	2454	1113	6	L	L	N/A
2.43	1.86	60	1524	2621	1189	6	L	N/A	N/A	
XDP Extreme duty plate	0.79	0.60	24	610	2230	1012	3	H	H	H
	1.05	0.80	30	762	2528	1147	4	H	H	H
	1.32	1.01	36	914	2749	1247	4	H	H	M
	1.59	1.22	42	1067	3047	1382	5	M	M	L
	1.87	1.43	48	1219	3267	1482	5	L	L	N/A
	2.15	1.64	54	1372	3565	1617	6	L	N/A	N/A
2.43	1.86	60	1524	3786	1717	6	N/A	N/A	N/A	
POWER HDP for use with ESCO multi-pin grabber only	0.76	0.58	24	610	3025	1372	3	H	H	H
	0.98	0.75	30	762	3183	1444	4	H	H	H
	1.21	0.93	36	914	3392	1539	4	H	H	M
	1.44	1.10	42	1067	3552	1611	5	M	M	L
	1.68	1.28	48	1219	3709	1682	5	M	L	N/A
1.91	1.46	54	1372	3920	1778	6	L	L	N/A	
DITCH	1.30	0.99	60	1524	1767	802	0	H	H	H
	1.45	1.11	66	1676	1928	875	0	H	H	M
	1.59	1.22	72	1829	2034	923	0	H	M	M

Approval Code For Arm/Bucket Combinations	
H.....	Heavy material (up to 3,370 lbs./yd³)
M.....	Medium material (up to 2,700 lbs./yd³)
L.....	Light material (up to 2,020 lbs./yd³)
N/A.....	Not applicable

Litho in USA 5/16 #LBX2306 supersedes #LBX2283

LBX® and Link-Belt® are registered trademarks. Copyright 2016. All rights reserved. We are constantly improving our products and therefore reserve the right to change designs and specifications.